



MICHIGAN STATE UNIVERSITY

CONSTRUCTION MANAGEMENT @ MSU



Sparta, Greece Statue of Leonidas

Inside Edition:

Letter from the Director.....	2	2021 Career Fair Recap.....	1
Executive Committee.....	4	Student Groups.....	14
Distinguished Alumnus.....	6	Letter from the Program.....	15
Alumni in the News.....	7	Department News.....	17
2021 Golf Outing Recap.....	8	Awards & Grants.....	22
2021 Homecoming Recap.....	10	Campus Updates.....	23
		Stay Connected.....	24



Michigan State University
Construction Management
(Alumni Group)



@MSUConstructionMgt
@msupwb
@msuspc



@michiganstatecm
@msupwb
@msu_sbca



Update your Alumni Profile!
alumni.msu.edu

Updating your alumni profile allows us to have the best contact information for all future publications! You can change your email, address, and current employer.

Your donations will directly support the program and current students. Search "CONSTRUCTION MANAGEMENT"



DONATE HERE!



Photo of Dr. Li

Message from the School Director

More than two years after the COVID-19 pandemic started to impact the world, the university, colleges and the School of Planning, Design and Construction (SPDC) have learned immeasurably from the unprecedented disturbance.

While the impact from the pandemic is still ongoing, SPDC and its Construction Management Program continue to adjust and adapt to the situation as we fulfill our mission. Credit should be given to our colleagues who have supported each other and have been doing their best for our students. I am immensely grateful for their support and dedication to the school.

The Future of the CM Program:

Realizing that the pandemic and its impacts would be long-lasting, the school has adjusted its priorities to focus on four different areas over the past two years:

- 1) Enrollment
- 2) Research Productivity
- 3) Revenue Generation
- 4) School Climate

In my assessment, we have met or exceeded our goal in each priority. Our school's student enrollment has increased significantly. Several faculty members have received federal research grants, such as the National Science Foundation. We have launched two online graduate certificate programs to expand our academic portfolio, and in the meantime, help the school's finance through the tuition coming to the programs.

Lastly, the school's diversity, equity, and inclusion (DEI) committee has developed the school's first ever DEI strategic plan. At the May school meeting, the school voted to adopt the plan. Our next phase is to implement tactics recommended in the plan.

The most welcoming news for the CM program is its successful re-accreditation by the American Council for Construction Education (ACCE). The visiting team articulated our strengths, including our exemplary program and school leadership; our motivated, committed faculty and staff; our highly capable, motivated students; our passionate alumni advisory board; and our facility/technology that continues to improve.

Having our CM Program re-accredited by ACCE shows the top-notch quality of our CM faculty, staff, students, and alumni. I am grateful for the efforts devoted by our faculty and staff in going through the preparation, documentation, and site visit.

The CM Industry Advisory Board's support is also appreciated, and Dr. Sinem Mollaoglu's leadership in this year-long process is especially admirable.



School of Planning, Design
and Construction
MICHIGAN STATE UNIVERSITY

Fundraising for the CM Program

Fundraising for the CM program was particularly noteworthy, as we received a significant gift to equip our building information modeling (BIM) laboratory. Several individuals generously set up new endowments, increased commitments, or documented estate gifts. Our immediate goal is to raise sufficient funds to increase our instructional capacity so that we can accept more of the best and brightest students to meet the CM industry's demand.

For more information on giving to the construction management program, please contact the faculty or the Advisory Board Fund Development committee to determine the best option for you.

Newest Faculty Members

Our CM program and school welcomed Mr. Harry Shah who joined us last fall as a teaching specialist. Harry was a Spartan and he worked as a project manager across the mid-west in the fields of renewable energy, industrial and heavy commercial construction, transmission and distribution, and infrastructure development.

We are also very fortunate to receive a new tenure stream faculty position from the college to focus on the real estate subject. Following a year-long search, Dr. Armin Jeddi Yeganeh from Virginia Tech will join us in the fall semester as tenure-stream assistant professor. Armin will contribute to the areas of construction management, sustainable housing, and real estate development.

Under the leadership of Dr. Sinem Mollaoglu, our CM program has been doing very well, given the challenge of the pandemic. The three CM student organizations continue to be engaged with their members. I would like to share my sincere gratitude for the CM IAB members and many CM friends for their continuing support.

Go Green!

Ming-Han Li, Ph.D., PLA, PE, FASLA, FCELA

Professor and **School Director**, School of Planning, Design and Construction



Message from the Board:

Fellow Alumni,

It is an absolute delight to present this year's Michigan State University Construction Management Alumni Newsletter. To say the creation of this newsletter has been a walk in the park is an understatement. It has taken many months, many conversations with stakeholders, and many long nights. We last issued a newsletter in the Spring of 2014, when I was a freshman at Michigan State, and at that time, in the Interior Design program. In fact, I met many of you that year at the 2014 Alumni Golf Outing, and I've operated in the background ever since.



Photo of Melanie Goerke

Shortly thereafter, I switched my major to CM, and dove headfirst into the world of Industry Advisory boards. Special thanks to both John Kelly, of Kelly Building & Development Company, and Doug Cron, of Cron Management for taking a chance on me, seeing my potential, and blazing my path to where I am today, Secretary and Treasurer of the MSU Construction Management Industry Advisory Board, going into my 8th year as the Alumni Golf Outing Co-Coordinator, member of every single committee, and ultimately wearer of probably one- too many hats.

Of course, my work on the Board is not lonely; in fact, I have 30+ other MSU alumni by my side who are dedicated to giving back to the next generation of CM students, where I once found myself. The purpose of the Board is first and foremost, to be a resource for the students, our mission continues to be to develop the next generation of Spartan CM graduates while meeting industry demands.

The Board will be undertaking several exciting and challenging initiatives over the next several years, including, but not limited to seeking to double the number of graduates from our program to meet the demand of companies like yours and mine.

We are dedicated to building relationships with faculty, staff, and students alike to meet our goals. The Board engages in Fund Development, hosting

events such as the beloved annual golf outing, the recently revitalized CM Alumni Tailgate (mark your calendars for October 15th!), and a brand-new Awards Banquet to honor fellow Spartans (to be held April 2023). The Board also engages in Strategic Planning, seeking new ways to grow the program, push ourselves in levels of support, and spearhead new strategic initiatives recommended by other alumni. Finally, the Board would not be without the Curriculum & Outreach committee, which partners with faculty and students on a consistent basis, handling ACCE re-accreditation endeavors, our mentorship program, our social media channels, and supporting our student groups, just to name a few.

We are always accepting nominations to the board on a rolling basis, with elections to be held as seats become available. If you are interested in giving back to the CM Program in a unique way, I invite you to consider becoming a Board Member. You can connect with me directly and learn more about opportunities available at msucmboard@gmail.com.

Over the next five years, the Board will be pursuing some incredibly special opportunities to grow our student numbers, increase diversity and representation of the student body, and will push to align curriculum with current industry expectations. The Board is an incredibly powerful and effective group of alumni.

To date, alumni like you across have donated directly to Board activities, providing over \$550,000 through the annual golf outing. We use those funds to support student field trips to active construction sites across the country, support all student organizations and competition teams, procure materials and equipment for the Construction Management Lab, and support critical endeavors within the program.

We always welcome additional comments, inspiration, and critiques of both the Board and the Program. We've heard from several alumni within the last year, providing valid outside input to the work of the Board, please know, we are actively listening, preparing, and responding accordingly.

We as a Board would not be anywhere without the dedicated support of our Alumni; whether that's through you as an individual or through your company. Please join us if you can at future events, share your spartan stories for future newsletters, volunteer as a mentor to current students, or of course, donate if you're able to support the next generation of construction management professionals. I look forward to seeing you around!

Go Green!

Melanie G. Goerke, LEED AP BD+C, WELL AP,
Class of 2017, CM IAB Secretary & Treasurer
HITT Contracting, Inc.
msucmboard@gmail.com

The McCarthy logo, featuring the word "McCARTHY" in white, bold, sans-serif capital letters on a red rectangular background.

**WE ACCOMPLISH
GREAT THINGS
TOGETHER**

COME BUILD WITH US
mccarthy.com/careers



2021 MSU CM Distinguished Alumnus

The 2021 MSU Construction Management Distinguished Alumnus award was presented at the 22nd Annual Construction Management Golf Outing to Dwight Hooks, of Brinker Group. Dwight serves as the Executive Vice President of L.S. Brinker.

Dwight is a 1993 graduate of the Building Construction Management Program (now CM) within the College of Agriculture and Natural Resources.



Photo of Dwight Hooks

During Dwight's 29 year career, he has experienced many unique projects, challenges, and opportunities. His career actually started in Indianapolis for a few years before returning to the Detroit area. Throughout his career he has worked for a few of the largest commercial contractors in the country, namely Walsh and Turner construction, as well as serving as a regional development manager for a Nationwide Owner. And since the fall of 2010 he has been with L.S. Brinker, where he currently fills the roll of the Executive Vice President.

As with all fresh out of college engineers, his career began in the field but quickly transitioned into estimating. The numbers behind the construction became his passion. Years later he expanded the breadth of his career by transitioning into the development world. Here, he developed a keen understanding of site selection, land acquisition, and overall budget awareness.

As a result, he has a unique lens to be able to effectively helps a clients make important decisions throughout the life of a project and acts as a facilitator with clients, architects, engineers, consultants, and contractors. This unique skill set brought him back to commercial construction roughly 20 years ago. His current role as the Executive Vice President finds him responsible for all the day-to-day operations of the company. He touches everything from business development, preconstruction, operations, and safety.

Notable projects include:

- DeVos Children's Hospital, Grand Rapids
- Henry Ford West Bloomfield Hospital, West Bloomfield
- WSU Mike Illitch School of Business, Detroit
- Book Tower, Detroit
- Detroit Pistons Practice Facility, Detroit
- Ford Michigan Central Station, Detroit

**WE'RE NOT JUST
CONSTRUCTING
BUILDINGS,
WE'RE BUILDING PLACES FOR PEOPLE TO BELONG**

BRINKER

brinkergroup.com

As a world-class, diverse construction group, Brinker has helped transform the Detroit skyline, while also providing opportunities, training and careers for Detroiters in ways that are sustainable and helping to create stronger communities.

Alumni Updates

1973 Graduate Al Scott and his wife Johanna (pictured) established the Alan F. Scott Fund for the Housing Education Research Initiative (HERI). The creation of the fund allows for the support of graduates, undergraduates, assistantships, educational programs, and other high priority needs of the program.

Mr. Al Scott is a dedicated Spartan alum, and a lifelong supporter of the CM program. Mr. Scott has previously served as an Industry Speaker for the School of Planning, Design, and Construction Industry Speaker Series and serves as an Advisory Board Member of HERI. Mr. Scott is also deeply involved with the long-standing success of the NAHB Residential Construction Management Competition Team led by faculty member Dr. George Berghorn.

To learn more, please visit:

<https://www.canr.msu.edu/news/construction-management-alum-establishes-endowment-to-support-housing-education-research-initiative>



Photo of Al and Johanna Scott

Cron Recieves CANR Alumni Service Award

Douglas J. Cron, B.S. Construction Management, '74, & M.A. Industrial Education, '78. Was selected to receive the 2020 MSU College of Agriculture and Natural Resources (CANR) Alumni Service Award.

The Award is one of the highest achievements at the College level, given to alumni who have demonstrated continuing outstanding volunteer service to MSU, the CANR or meritorious public service on a local, state, national or international level. Doug has also been inducted into the **Farm Lane Society**.

As a former faculty member and Program Director, retiring in 2007, Doug has remained deeply involved with the University. He previously served on and founded the MSU Construction Management Advisory Board, retiring from his decades of commitment to the IAB in 2021.

Cron has been honored for his achievements as a 2006 Construction Management Hall of Fame inductee. He was named the 2003 NAHB Educator of the Year and received the Award of Excellence from Sigma Lamda Chi in 1995. Doug still resides in the East Lansing area, as well as Traverse City, and continues to operate Cron Management, one of the most successful property management and development companies in the area.



Photo of Doug Cron



2021 Golf Outing Recap

The 2021 MSU Construction Management Alumni golf outing took place on Tuesday, August 3, 2021. We welcomed 220 golfers, representing 43 industry companies to the Forest Akers Golf Course in East Lansing, Michigan. We had over 40 unique sponsors, and netted approximately \$40,000 for the Construction Management Program.

The winning team was **Tremco**, Commerical Sealants & Waterproofing. Our Diamond Level sponsor was **Barton Malow**, Platinum sponsor by **Alberici**, and four Gold sponsors by **Accel Construction**, **Helix Traffic Solutions**, **Power Construction**, and **McCarthy Building Companies**. Save the Date for this year's outing, taking place on **Tuesday, August 2, 2022!**



2022 GOLF OUTING



REGISTER HERE!



2021 GOLF OUTING SPONSORS - THANK YOU!



KELLY BUILDING & DEVELOPMENT COMPANY LLC



OLIVER / HATCHER
CONSTRUCTION



2021 CM Tailgate Recap/Save the Date

On an overcast fall day in early October, CM Students, Alumni, Faculty, and Friends gathered for the 2021 CM Industry Advisory Board (IAB) Tailgate to cheer on the Spartans as they took victory over Western Kentucky (48- 31) for the annual homecoming football game. Each year, the IAB has put on a tailgate that coincides on or around homecoming or the CM career fair, 2021 was no different aligning with both. 82 Attendees participated from ages 1 to 70 celebrating current, future, and past Construction Management students. The event was organized by the Curriculum & Outreach committee of the board and resulted in almost 300 sandwiches consumed, over 800 drinks, and all made possible by Board member companies. A special thanks goes out to Sachse Construction, Ardmore Roderick, and Alberici Constructors for their unwavering commitment to our CM Students in making the tailgate a success.

Save the Date! 2022 IAB Tailgate will take place on Saturday, October 15 against Wisconsin. Location will be the same as 2021; Outside McLane Baseball Stadium near Sparty. Sponsorships are available! Contact msucmboard@gmail.com for more information.



SAVE THE DATE

CM ALUMNI TAILGATE

SATURDAY, OCTOBER 15TH VS WISCONSIN

11:30 AM // Kick-off at 3:30 PM

7th Annual Alumni Tailgate



Location:

OLD COLLEGE FIELD

(Between Jenison Field House
& McLane Baseball Stadium)



Food, Drinks, and 43" TV's!
Company Sponsorships
Available.



RSVP at:
msucmtailgate.eventbrite.com



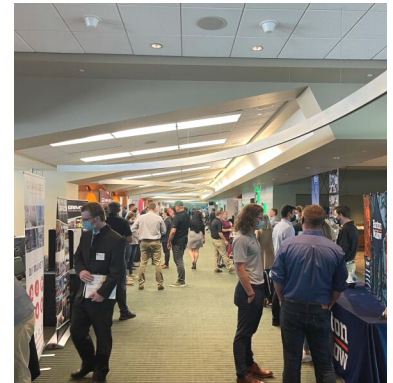
2021 Career Fair Recap

Nearly 60 companies were present at the 2021 MSU Construction Management Career Fair held at Spartan Stadium. This was one of the first events held in person for the 2021-2022 academic year.

The career fair sees students beginning at all levels of the program for summer internships and full-time opportunities. The event is also open to other students in the School of Planning, Design and Construction, as well as the School of Engineering, most commonly Civil Engineering.

For information on how to register for future fairs, recruit students, or fill internship positions, please be sure to connect with us!

The fair is always held in the fall at Spartan Stadium.



2022 CAREER FAIR INFO!

Registration for the 2022 MSU **Construction Management Career Fair** is now open!

Employers can register on Handshake directly.

The sponsorship package to the left will be available on a first come, first serve basis. For more information on the sponsorship package please contact Bob Aydukovic at: aydukov2@msu.edu

SEPTEMBER 29, 2022!

MSU CM CAREER FAIR SPONSORSHIP PACKAGES				
		Tower  3 Spots Available	Bridge  7 Spots Available	A la Carte  Dependent on Availability
<i>Before Career Fair</i>	Pre-fair Presentation Night	Presenting Slot Refreshment Table Sponsor Event Program Sponsor	Presenting Slot Event Program Listing	\$1,000 Presenting Slot Program Listing
	Lunch with the Leaders	Two Seats	One Seat	Not Available
<i>During Career Fair</i>	Career Fair	2 tables in premium location Event Signage	1 table in preferential location Event Signage	\$800 1 booth
	CM Social Media Takeover	Full day takeover during week of career fair	Half day takeover during week of career fair	Not Available
	CM Resume Book	Company logo on front cover	Company logo on back cover	Not available
<i>After Career Fair</i>	Interview Day	Included	Included	\$100 per room
	CM Program Networking Event	5 reservations for sponsor staff 2-hour reception Food and beverage sponsor Unlimited Activities	2 reservations for sponsor staff 2-hour reception Unlimited Activities	Not available
	AGC SCAN Transportation	2 seats on MSU Bus for interaction with students	Not available	Not available



ACCE Dan and Jehnell Dupree Construction Education Fund!

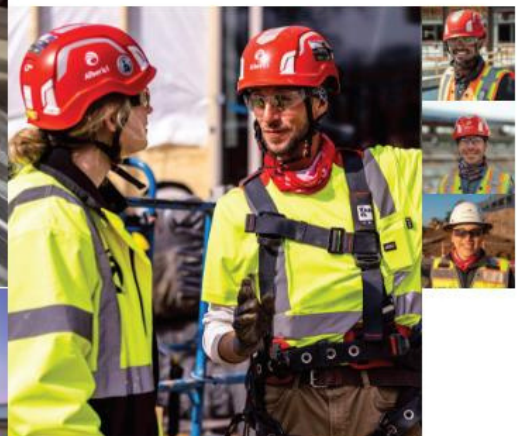
Awards an annual scholarship up to \$5,000 for a candidate pursuing an advanced degree in construction management with a desire to teach in an ACCE accredited construction management program. Applicants must have been accepted in an advanced degree program in construction management in an institution with an ACCE accredited undergraduate program

**MID-YEAR 2023 CONFERENCE
IRVING, TX, FEBRUARY 2023**

Join us at the ACCE Mid-Year 2023 conference in the Spring!

For more information on ACCE - visit: acce-hq.org

BUILD YOUR TOMORROW



alberici.com

WE BUILD

WHERE MSU ATHLETES PLAY

Barton
Malow



WWW.BARTONMALOW.COM

**PROUD SUPPORTERS OF
MICHIGAN STATE'S
CONSTRUCTION
MANAGEMENT
PROGRAM**

Meet the Groups



SBCA



PWB

BUILT TO LEAD

CM Student Groups

Comprised of the Student Builders and Contractors Association (SBCA), the Professional Women Builders (PWB), Sigma Lambda Chi (SLC) (not pictured), and the Graduate Student Association in Construction (GSAC) (not pictured), the MSU Construction Management student body is deeply engrained in taking steps to become future leaders. Each of the student groups support dozens of members from varying backgrounds interested in future careers in the built environment.

Each student group hosts events throughout the year, including social events, networking and professional events, and industry specific events. The MSU Construction Management Industry Advisory Board supports them financially throughout the year by proceeds from the annual golf outing. Companies interested in sponsoring specific events or a student group should reach out directly to the faculty advisor for more information. The 2022-2023 academic year is sure to see even more from our students than in recent years, be sure to follow social media for more sneak peeks at what the students are up to!

COMMITTED TO WHAT'S NEXT

Our success over the past 85 years is a direct reflection of our team members. Together, we're focused on the future of the building industry. Whether you're just embarking on your career or you're a seasoned construction professional — you belong here.

> JOIN US AT [HITT.COM/CAREERS](https://hitt.com/careers)

HITT



Photo of Sinem Mollaoglu

Message from the Program Director

It is with great pleasure that I write this message to all our alumni, partners, and stakeholders out there today, from my work station at my home's deck, in this breezy and beautiful early Michigan summer day.

I have been partially working from home for the last couple years, what truly felt like an eternity. I still continue to do so while trying to find our new 'normal' like the many of us. What challenging times have we gone through in these past years! We continue to weather the change.

The changes forced on us by the pandemic have been overwhelming, but it is with pride that I report sustained growth and improved impact from our ends. Working towards our mission, that is, "to inspire and educate future leaders and engaged citizens who will innovate the built environment industry," our program has focused on the following focus areas:

- Cohesive and Strong Program Identity
- Enriched and Inclusive Student Experience
- Exemplary Research and Interdisciplinary Efforts
- Diversified Funding Models
- Impactful Outreach and Engagement

We have made great strides in all our focus areas. This semester, we observed all-time record high number of paid-admits to our undergraduate program at freshman level. Preceded by steady growth over the years, this seals our program's transformation from **'Discovery'** to **'Destination'** status.

We also have enjoyed improved and diverse student engagement and leadership in our program via student organizations, competition teams, and individual efforts spanning across the areas of professional development, hands-on experiences, research, and outreach.

Here are some of the recent highlights, showing our students' crowned achievements and our program's impacts reaching across local, state, national, international levels:

- Residential team took third place at NAHB competition. This is their team's fifth consecutive time on the podium with coach Dr. George Berghorn.
- Commercial team kicked off our program's ABC competition attendance with coach Bob Aydukovic.
- Professional Women Builders student organization successfully kicked off STEM career exploration events with Lansing Girls Scouts.
- Mohsen Goodarzi started as a tenure track faculty member at Ball State University.
- Lia Mastroianni received the NAHB Student Chapter Outstanding Student Award.
- Sam Bourgeois & Tim McAuliffe received AGC of MI Educational Endowment Fund Scholarships Award.

Select student research presentations our students presented:

- Sheraya Garad - Life Cycle Assessment - International Mass Timber Conference.
- Meltem Duva & Hasan Bayhan - Project Team Networks - ASCE CI & CRC Conference.

Our faculty is leading cutting-edge research in intelligent technologies and energy efficiency, team science and integrative project delivery, mass timber, sustainability, and construction education with recently awarded large-scale federal grants. They also received multiple prestigious awards in the past couple years from the university and national professional and academic societies. These efforts are core contributions to our leading institution status among our peers; ensuring to attract, retain, and educate top talents.

Of note, we had significant changes to our core faculty during the last couple of years: Professors Tim Mrozowski and Marcus Metoyer retired; Bob Aydukovic and Harry Shah joined us. We will also welcome our newest addition to faculty, Dr. Armin Yeganeh, in the coming academic year. A recent graduate of Virginia Tech, Dr. Yeganeh will bring momentum to our program's real-estate specialty, including the new graduate certificate program.

Our program went through a number of curriculum changes in the last couple years to improve student learning outcomes and industry engagement. Those included revamping of capstone and summer internship courses and offering of a new hands-on lab course. **Our program's six-year re- accreditation by ACCE this year is no small achievement and speaks to our hard and well-worth work across all areas.**

I thank all our stakeholders, especially our faculty members, administration and staff at school, college, and university levels, our industry and alumni board members, our students, and the ACCE visiting team for all of their efforts.

Dedication to continuous improvement is at the heart of what we believe, practice, and teach. Reaccreditation with a plethora of strengths outlined is a testament of our dedication. It also motivates us, more than ever, to continue pursuing our goals for improvement and growth.

Our priorities moving forward are to:

- Create 'Endowed Professor' & 'Professor of Practice' positions to recruit and retain high quality faculty through industry partnerships.
- Expand our program's capacity for higher number of high-caliber graduates to satisfy the industry demands and student needs.
- Provide opportunities to attract and retain higher diversity of backgrounds to our program.

I invite you to partner with us in these pursuits to sustain and grow our success. Together, with **'Spartans Will'** in our community, I am confident that we can meet these goals and set our eyes on new horizons in the very near future.

Stay connected and as always. **GO GREEN!**

Sinem Mollaoglu, PhD, LEED AP, CGP,
Professor and Program Director of
Construction Management, School of Planning,
Design, and Construction, **Michigan State University**



School of Planning, Design
and Construction
MICHIGAN STATE UNIVERSITY

New Faces, Meet the Faculty!

The MSU Construction Management Program has hired several new faculty members lately, who are dedicated to the success of the program and the education of our students. Please join us in welcoming these talented CM professionals!

Bob Aydukovic joins us from the Maryland Center for Construction Education and Innovation (MCCEI), where he served as president. Bob currently coaches the Commercial Construction Competition Team and serves as the advisor for SBCA. Bob is a 1989 graduate of the BCM program and has a masters degree in real estate from Johns Hopkins University.

Harry Shah joins us directly from the industry, having worked for an electrical contractor as a project manager. He brings his many years of experience in utility systems, structural systems, and scheduling to the program. Harry is a 2017 graduate from the MSU CM masters program.

Joe Maguire joins us as an adjunct professor, bringing his decades of experience as CEO of Wolverine Development. Professor Maguire also serves as the Coordinator for the Graduate Certificate Program and is the co-founder of the SPDC Industry Speaker Series. Welcome All!



Photo of Harry Shah



Photo of Bob Aydukovic



Photo of Joe Maguire

CM Program Re-Accredited for Six Years!

The MSU SPDC CM Program has been selected for Re-Accreditation for 6 years, through 2028. The program is accredited by the American Council for Construction Education (ACCE). Several members of the CM IAB and faculty were present for the award ceremony which took place in Irving, Texas in February 2022.



Dr. Matt Syal on Sabbatical at Cal-Poly

Dr. Syal spent the Spring 2022 semester in the CM department at California Polytechnic University in San Luis Obispo, CA. The goal of the sabbatical is to learn new ideas from another successful program and to provide input to them based on our experiences. Dr. Syal's focus areas during the sabbatical are:

1. Be exposed to the innovative curricula being implement at CM in Cal Poly
2. Learn from their highly successful industry board liaison including vast array of sponsored student activities and fundraising
3. Provide input for their plans to develop graduate programs in CM and Real Estate



Photo of Dr. Syal at Cal Poly

Endowment Funds Received for the Housing Education Research Center (HERI)

HERI has an active industry advisory board whose members are committed to providing support for residential industry-related education, outreach and research activities. For the last 9-10 years, HERI activities have been supported by the HELP grant, led by Dr. Sinem Mollaoglu, Dr. George Berghorn, and Dr. Matt Syal, from the National Housing Endowment of NAHB, and funds provided by the advisory board members.

With the HELP grant coming to an end by December 2022, advisory board members are working towards raising \$1 million for the HERI endowment. The proceeds from these endowment funds will be used to support HERI activities from 2023 onwards.

Anyone interested in supporting HERI activities should contact, Prof. Matt Syal, Director HERI – syalm@msu.edu

For more information on the Housing Education Research Initiative - please visit:

https://www.canr.msu.edu/spdc/programs/construction_management/housing_education_reseach_center

Hands on Lab

Prof. Harry Shah relaunched the hands-on lab elective in spring 2022. Students learned the art and skill of construction trades with the help of demonstrations from regional skilled trade professionals. During the semester long class, students built working modules complete with framing, masonry, and functional MEP systems. Students from both the undergraduate and graduate programs participated and Mr. Shah looks forward to building on this success in future years.



Zhao Receives National Science Foundation Career Award

Dr. Dong Zhao was awarded a highly prestigious award from the National Science Foundation (NSF) known as the CAREER Grant Award. This award from the NSF is one of the highest honors given to young faculty members in science and engineering.

It is NSF's most prestigious awards in support of early-career faculty who have the potential to serve as academic role models in research and education.

Dr. Zhao is an Associate Professor in the Construction Management Program, joining in 2015 from Virginia Tech. Dr. Zhao's research focuses on human-building integration towards smart and sustainable cities.

He serves as the Graduate Program advisor and teaches the following courses at the undergraduate level:

- CMP 222 Statics & Strengths of Materials
- CMP 328 Building Information Modeling

ACCElerate your project



acceldevgroup.com

Competition Team Does it Again!

The MSU Construction Management Residential Competition Team placed 3rd this year in the National Association of Home Builders (NAHB) Residential 4-Year Construction Management Competition. This marks the 5th consecutive year in the row that the MSU CM team has placed on the podium.

The team is led by Dr. George Berghorn and has been dubbed "Spartan Building Group" for years between the students. Since 1994, the MSU team has won the competition four times, and finished on the podium 12 times. Congrats to all students for another great year!



Retirement News



Photo of Marcus Metoyer



Photo of Tim Mrozowski

After decades of dedicated service, we announce the retirement of both Professor Tim Mrozowski and Professor Marcus Metoyer. Tim previously served as Program Director, professor of Contracts and Structures (to name a few), and wrangled all Italy Study Abroad trips. Congrats!

Marcus served as professor of Utility Systems and Real Estate Finance (among others). He received his bachelors and masters from MSU in Construction Management. Both Tim and Marcus join former professors Ron Von Bernuth, Doug Cron, and Paul Streng to have retired from the MSU CM program.



WE BUILD WHAT MATTERS

Buildings. Relationships.
Careers. Trust. Certainty.
Success.



@power_construct [Twitter](#) [Instagram](#) [LinkedIn](#)

ABC Competition

MSU CM fielded its first ever Commercial Competition Team with the Associated Builders and Contractors at its annual convention in San Antonio, TX from March 14-18. The students worked diligently on a proposal for a 125K SF, 5 story commercial office building with ground floor retail and underground structured parking for 300 cars. The project, 701 Rio, is an actual project in downtown Austin, TX that was recently completed by Hensel Phelps. Our team competed as one of 14 schools from around the country, made the short list for presentations, and finished eighth overall.

The 2022 Construction Management Competition was a tremendous experience for the students who also had full conference passes. Many thanks to ABC Greater Michigan Chapter, ABC of Michigan,



Photo of ABC Competition Team

Left to right: Bob Aydukovic, Faculty Advisor, Jack Mandell, sophomore, CM, Kennedy Kramek, sophomore, CM, Liliana Spencer, sophomore, CM, Grant Peterson, sophomore, CM, Tim McAuliffe, sophomore, CM

Greater Michigan Construction Academy and the ABC member sponsors: Three Rivers Corporation, Wolgast, AC Electric, AIS Construction Equipment, Tancor, Valley Electric, and Consolidated Electric.

Graduate Certificate Programs Launched

In Summer Semester 2022, SPDC welcomed its first class to the Graduate Certificate Program (GCP). The GCP has two offerings for graduate level education in the built environment designed for the working professional. Both programs offer a full online experience so students can learn at their own pace around their busy schedules with ample opportunity to interact with SPDC faculty and peers. Each certificate is 9 credit hours and can be completed in less than a year. The Certificates are stand-alone credentials but for students that want to pursue an advanced degree, credit hours earned fully articulate into SPDC's Masters programs in either Construction Management or Urban and Regional Planning.

The **Real Estate Development and Construction Certificate (REDC)** is focused on the commercial real estate sector with classes on development process from planning, zoning, finance through construction and property management.

The **Urban Resilient Redevelopment Certificate (URR)** is focused on the redevelopment of urban cores and neighborhoods, sustainability, climate impacts and building and building material use and reuse.

Classes are offered year round and students can start at any point in the cycle. Applications are now being accepted for Fall Semester 2022. More information please visit the respective Certificate websites (spdc.msu.edu) or contact the GCP Coordinator, Joe Maguire at maguir30@msu.edu.

Grants, Awards & Recognition



Photo of Dr. Sinem Mollaoglu

- CANR "You Belong Here" Champion Award, 2021
- MSU AgBio Research Administrative Fellow, MSU 2022-2023.
- ACCE Re-accreditation Program Lead
- \$1,439,993 - National Science Foundation - Intelligent Social Networks
- \$490,159 - National Science Foundation - Project Systems



Photo of Dr. Matt Syal

- ASCE Outstanding Reviewer, Journal of Architectural Engineering
- Leads the Housing Education Research Center
- Leads the SPDC Industry Seminar Series
- MSU Reappointment, Promotion, and Tenure Committee
- \$100,000 - National Housing Endowment - HELP Grant



Photo of Dr. Mohamed EL-Gafy

- Co-Principal Investigator, Autonomous Futures, SPDC
- ACCE Student Learning Outcomes Lead
- \$205,000 - Mich. Dept. of Transportation - Digital Technologies Construction Processes, Technology and Value Chains

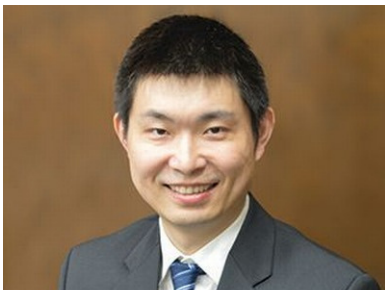


Photo of Dr. Dong Zhao

- \$505,626 - National Science Foundation - Intelligent Energy Retrofit
- AGC Faculty Industry Residency Fellow, Summer 2020
- ASCE Outstanding Reviewer, Journal of Construction Eng. and Mgmt.
- ASCE Outstanding Reviewer, Journal of Civil Engineering Education
- \$490,159 - National Science Foundation - Project Systems (Co-PI)



Photo of Dr. George Berghorn

- \$650,000 - National Science Foundation - Mass Timber Curriculum
- \$100,000 - National Housing Endowment - HELP Grant
- \$2,000,000 - Dept. of Energy - Energy Efficiency in Mfg and Bldgs.
- NAHB Residential Competition Team Coach - 2015 to Present

IM West to be Replaced

The main rec center in the middle of campus will be replaced with a new Health, Wellness and Fitness Center. A conceptual rendering can be seen on the right. Construction is expected to take several years and is funded primarily through a new student recreational activity fee.



Proposed Rendering of New Rec Center

Munn Ice Area Expansion

Munn Ice Arena will see a new grand entrance that include memorabilia, additional concessions, new locker rooms and coaching offices, and redesigned entry ways. MSU CM Alumni Tom Anastos (BCM, '87) served as Head Coach of the Men's Hockey Team from 2011-2017. The project was delivered by Barton Malow.



Photo of Munn Ice Arena

New STEM Building

Completed in Fall of 2021 on the corner of Shaw Ln and Red Cedar Rd replaces the former Shaw Lane Power Plant. The new STEM Teaching & Learning Facility was constructed with the use of Cross-Laminated Timber. The facility adds 100,000 SF to the campus portfolio and delivered by Granger Construction.



Photo of STEM Facility

Billman Music Pavilion

The MSU Billman Music Pavilion added an additional 37,000 SF to the existing College of Music with an additional 8,500 SF renovation to the music practice building. The project, completed in 2020, is located on the north side of the Red Cedar river and was delivered by The Christman Company.

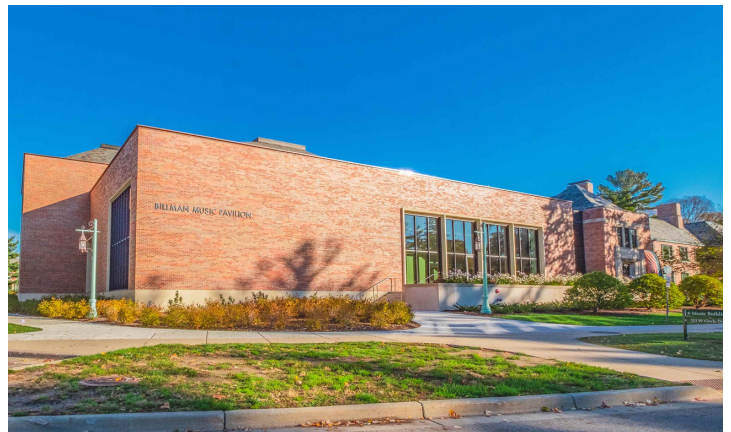


Photo of Billman Music Pavilion



School of Planning, Design
and Construction
MICHIGAN STATE UNIVERSITY

School of Planning, Design and Construction
Human Ecology Building
552 West Circle Drive, Room 101
East Lansing, MI 48824-1030

Michigan State University Construction Management Program

ALUMNI NEWSLETTER

Issue No. 1 | June 2022

CONTACT US

CM IAB

You can contact the Secretary of the CM IAB related to all contents of this newsletter, ways to get involved, or additional information by reaching out to:

msucmboard@gmail.com

SPDC

You can contact the School of Planning, Design, and Construction directly related to the curriculum, research, or other program directed initiatives by reaching out to:

spdc@msu.edu
